



Castlefields Primary School, Castlefields, Bridgnorth, Shropshire WV16 5DQ

26th November 2021

Covid Cases

I wanted to start this newsletter with a HUGE thank you to all the children who have taken PCR tests when they are potentially close contacts of a positive Covid case. I know this is not the most pleasant test, but your diligence and understanding is really appreciated. The rate in Shropshire remains high and we are therefore advising anyone with symptoms to get a PCR test. Lateral Flow tests do not always work once you are symptomatic.

If there are positive cases in your child's class, I post a message on ClassDojo and alert you to that using our text messaging service.

Please could you continue to inform the office about any positive cases during school hours, or email me outside of school hours:

head@castlefields.org.uk

Shropshire Council | STEP UP SHROPSHIRE

Get tested

if you have any of these symptoms:

- High Temperature
- New, continuous cough
- A loss of taste or smell

Precautionary symptoms may include:

- Headaches
- Aches & pains
- Feeling tired without any good reason
- Sore throat
- Runny nose
- Sneezing
- Tummy ache in children

Book your test now by calling 119 or visit www.nhs.uk/coronavirus

www.shropshire.gov.uk

Competition Time!

Thank you and well done to all those who entered the poster competition – we were overwhelmed with entries. The winners and prizes will be announced in assembly on Monday!



Stepping Out—Year 3

We are very proud of our Year 3 children who did their Stepping Out Training this week. Mr Hughes said “I really did feel they represented themselves and the school ever so well. Lots of residents were out and making nice comments as they passed.”
Well done Year 3!

PTA News Christmas Rainbow Day

Thank you to all the children who dressed in their class colour and donated a gift for the rainbow raffle. If you would still like to make a donation, please see the office. As a thank you, the PTA gave each child a raffle ticket to win a family ticket to Bridgnorth’s Santa’s Grotto . The Winner will be announced in Assembly on Monday.

Elf Day

On Friday 3rd December we would like all children to dress up as an Elf to spread some festive cheer and raise money for people affected by dementia. The day will be non uniform: whether it be a festive elf hat and pointy ears or a full elf costume, please join in the fun. Donations via

<https://www.justgiving.com/fundraising/ElfDay-Castlefieldsprimaryschool>



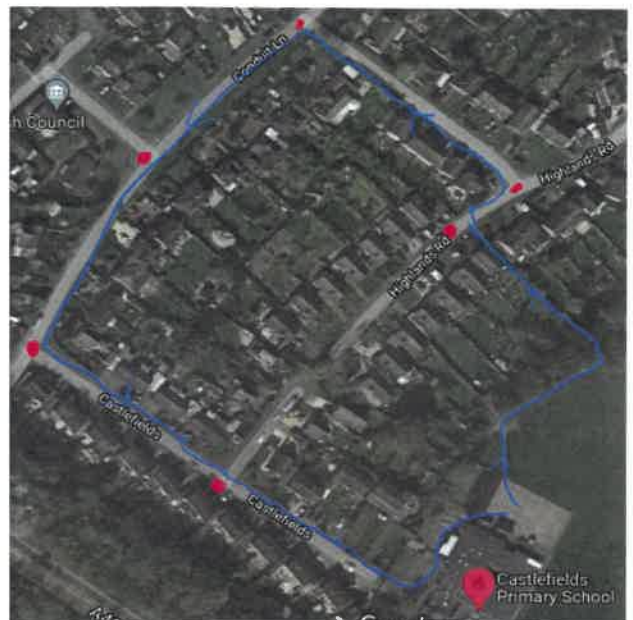
Elf/Santa Dash

Next Friday (3rd December), as part of our Elf day, we are going to complete a whole-school fun run at 11am-11:30am.

We will run in the following order:

- Reception with year 6
- Year 5
- Year 1 with year 4
- Year 2 with year 3

We will have music and dancing to finish back on the playground.



Understanding Your Child

The Parenting Team will be delivering face to face as well as virtual **Understanding Your Child** and **Understanding Your Child SEND** groups from January 2022. Please find attached posters with further details.

All residents of Shropshire can also access a variety of online courses for free.

NHS UNDERSTANDING YOUR CHILD SOLIHULL APPROACH

ONLINE ANTENATAL course
FREE across Shropshire and Telford

Written by Registered Midwives & NHS professionals

Part of the Solihull Approach series
9 Modules, lifetime access
Available 24/7

Understanding Pregnancy, Labour, Birth and Your Baby

For everyone around the baby:
Mums, Dads, Grandparents, friends and relations...

Go to www.inourplace.co.uk
Apply this 'Access Code' to get access for FREE
DARWIN18

For technical support contact
solihull.approach-parenting@heartofengland.nhs.uk
or 0121 296 4448 Mon-Fri 9am-5pm

NHS UNDERSTANDING YOUR CHILD SOLIHULL APPROACH

ONLINE POSTNATAL course
FREE across Shropshire and Telford

Written by Psychologists, Psychotherapists, Health Visitors & NHS professionals

Part of the Solihull Approach series
9 Modules, lifetime access
Available 24/7

Understanding Your Baby

For everyone around the baby:
supporting you and the new arrival
(0-12 months)

Go to www.inourplace.co.uk
Apply this 'Access Code' to get access for FREE
DARWIN18

For technical support contact
solihull.approach-parenting@heartofengland.nhs.uk
or 0121 296 4448 Mon-Fri 9am-5pm

NHS UNDERSTANDING YOUR CHILD SOLIHULL APPROACH

ONLINE course FOR PARENTS
FREE across Shropshire and Telford

Written by Psychologists, Psychotherapists, Health Visitors & NHS professionals

Part of the Solihull Approach series
11 Modules, lifetime access
Available 24/7

Understanding Your Child

For everyone around the child:
Mums, Dads, Grandparents, friends and relations...

Go to www.inourplace.co.uk
Apply this 'Access Code' to get access for FREE
DARWIN18

For technical support contact
solihull.approach-parenting@heartofengland.nhs.uk
or 0121 296 4448 Mon-Fri 9am-5pm

NHS UNDERSTANDING YOUR CHILD SOLIHULL APPROACH

ONLINE course FOR PARENTS
FREE across Shropshire and Telford

Written by Psychologists, Psychotherapists, Health Visitors & NHS professionals

Part of the Solihull Approach series
11 Modules, lifetime access
Available 24/7

Understanding Your Teen

For everyone around the child:
Mums, Dads, Grandparents, friends and relations...

Go to www.inourplace.co.uk
Apply this 'Access Code' to get access for FREE
DARWIN18

For technical support contact
solihull.approach-parenting@heartofengland.nhs.uk
or 0121 296 4448 Mon-Fri 9am-5pm

NHS UNDERSTANDING YOUR CHILD SOLIHULL APPROACH

Online course for teenagers

'Understanding your brain (for teenagers only!)

- Have you noticed changes in your behaviour?
- Do you sleep more than you used to?
- Want to know why teenagers are more open-minded?

Your brain is changing!
Find out more!

Visit: www.inourplace.co.uk
and **apply the code Darwin18 to get free and unlimited access**

or technical support contact:
solihull.approach@heartofengland.nhs.uk
or call 0121 296 4448 Mon-Fri, 9am-5pm

9 Modules

NHS ourplace

ONLINE course for residents of SHROPSHIRE
Register Online and gain **FREE (prepaid) access***
*where eligible

Part of the Solihull Approach series
14 Modules
Available 24/7

Go to: www.inourplace.co.uk
and enter the 'access code'
DARWIN18
To return to the course(s), go to www.inourplace.co.uk and sign in

For technical support contact
solihull.approach@heartofengland.nhs.uk
or 0121 296 4448 Mon-Fri 9am-5pm

Understanding your child with additional needs

For everyone around the child:
Mums, Dads, Grandparents, friends and relations

f SolihullApproach www.inourplace.co.uk
t SolihullApproach www.solihullapproachparenting.com

FRIENDS OF CASTLEFIELDS PRESENTS...

CHRISTMAS MOVIE NIGHTS

KS2 THE SANTA CLAUSE - WEDNESDAY 1ST DECEMBER

KS1 THE GRINCH 2018 FRIDAY 3RD DECEMBER

3.30PM - 5.45 PM IN THE SCHOOL HALL

£3 PER CHILD TO INCLUDE REFRESHMENTS AND

A RAFFLE TICKET TO WIN A PRIZE!

DRINK AND SNACK SERVED DURING INTERVAL





Understanding YOUR Child

- Would you like to know more about your child's development?
- Do you understand your child's behaviour?
- Would you like a chance to meet with other parents with children of a similar age?

Understanding Your Child Groups

Delivered Face to Face or Virtually

(All you need is an email address and an electronic device for virtual groups and we'll talk you through the rest)

Dates & Times

Monday 24th January 2022 for 10 weeks (excluding school holidays)

Time 13.00—15.00 Virtually

or

Friday 28th January 2022 for 10 weeks (excluding school holidays)

Time 09.30—11.30 at Sunflower House, Shrewsbury

To book a place on one of our groups or for further information on the groups we run please contact the Parenting Team by:
Emailing Parenting.team@shropshire.gov.uk or
Telephone: 01743 250950



Understanding YOUR TEEN



Understanding YOUR Child

- Would you like to know more about your child's development?
- Do you understand your child's behaviour?
- Would you like a chance to meet with other parents with children of a similar age?

Understanding Your Child SEND Groups

Delivered Face to Face and Virtually

(All you need is an email address and an electronic device for virtual groups and we'll talk you through the rest)

Dates & Times:

Tuesday 25th January 2022 for 10 weeks (excluding school holidays)

Time 09.30—11.30 at Crowmoor Hub, Shrewsbury

or

Wednesday 26th January 2022 for 10 weeks (excluding school holidays)

Time 09.30—11.30 Virtually

To book a place on one of our groups or for further information on the groups we run please contact the Parenting Team by:
Emailing Parenting.team@shropshire.gov.uk or
Telephone: 01743 250950



Understanding YOUR TEEN